



360a Model Y Label Applicator

The 360a Model Y Label Applicator evolved from the industry standard 360a Series Platform.



Tamp Module



Air Blow Module

Setting Global Standards
One Customer at a Time

www.ctmlabelingsystems.com



360a Model Y Label Applicator

Features:

The 360a Model Y Label Applicator is the next generation of our industry standard 360a Series Platform. The 360a Model Y can be configured as a merge, blow-on, or tamp-blow applicator. 5", 7.5", or 10" widths can also be easily switched to the opposite hand with few or no change parts in a minimum amount of time. All units are now servo motor driven to include State-of-the-art electronics and a "Self-teaching" label sensor. With new enhancements for communications, software revisions and upgrades are made available via remote downloads.

Servo Motor:

The 360a Model Y now utilizes highly efficient servo technology with a planetary gearbox for consistent and accurate performance, and is programmable to dispense labels up to 3,000* inches per minute.

Control:

The 360a Model Y comes packed with the same features as its predecessor as well as upgrades including Safe Torque Off, (IEC 61508 SIL3 safety certification), Ethernet/IP capabilities for system controls integration, fault log, and stored alpha-numeric label format naming conventions. Additionally, the 360a Model Y has been given an updated electrical design utilizing Printed Circuit Board (PCB) connectivity to improve user friendliness and support. External connectors are available to accommodate the following:

Low Label Sensor **End of Web (Web Break) Sensor**
Loose Loop Control **Imprinting**
Single, Double, or Triple Light Stack
Encoder Velocity Compensation
Product Shape Profiling
Zero Downtime Configuration

Two-channel emergency stop monitoring, automatic start (manual optional), cross circuiting detection, category 3, PL d (EN ISO 13849-1), SILCL 3 (EN 62061).

Operator Interface:

The 7", 256 color, TFT touch screen operator interface provides a bold, bright, high contrast display with self-diagnostic platforms and multi-level intuitive set-up features.

Electrical:

120 VAC, 50/60 Hertz,
Single Phase, 5 amps.
240 VAC available

Air Consumption:

Up to 4 CFM at 60-90 psi.

Labeling Speeds:

*Programmable to 3000 inches per minute with secondary unwind and vacuum takeaway. Programmed with speed profiling ability.

Product Sensing:

Retroreflective scanner provided as standard, other types available.

Label Sizes:

	Minimum	Maximum
Air Blow	3/4" wide x 3/4" L	7.5" wide x 9" L
Merge	3/4" wide x 3/4" L	10" wide x 20" L
Tamp	3/4" wide x 3/4" L	10" wide x 10" L

Label Roll Size:

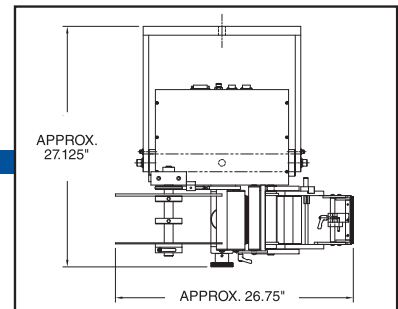
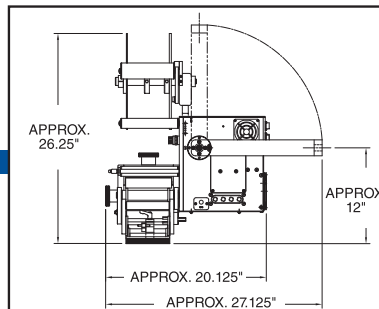
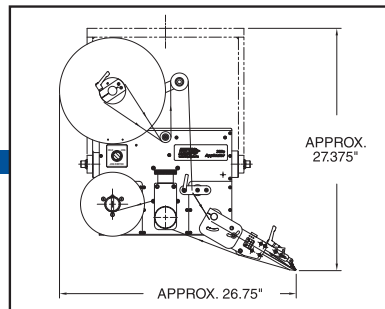
Maximum 12" OD x 3" ID core
Optional 16" OD or 20" OD x 3" or 6" ID cores

Label Placement:

+/- 1/32"

Approximate Dimensions:

Air Blow 28" wide x 24" Tall x 27-1/2" Deep
Merge 29" wide x 25" Tall x 27-1/2" Deep
Tamp 28" wide x 22-1/2" Tall x 27-1/2" Deep



Distributed By:



1318 Quaker Circle
P.O. Box 589
Salem, Ohio 44460
(330) 332-1800

www.ctmlabelingsystems.com

360aModelY/0223

